

# MDR-U <sup>MEGACODE</sup>™

## Linear

### Universal

### MegaCode™

### Receiver

#### For Garage Door Operator Remote Control Installation Instructions

DEK CANADA INC.  
1926 ST-REGIS BLVD., DORVAL, QC, H9P 1H6  
TEL: 514-685-5800  
TOLL-FREE: 1-800-361-3198  
FAX: 514-685-5804  
www.dekcanada.com



#### PRODUCT DESCRIPTION

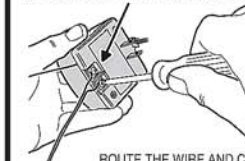
The Model MDR-U Universal MegaCode™ Receiver is designed for use as a replacement radio control receiver in garage door operator installations. The receiver is self-contained, not requiring an external transformer or power from the garage door operator. The receiver plugs directly into a 120 VAC outlet. A retaining screw is provided to secure the receiver to the outlet.

Two screw terminals on the receiver are for connection to the garage operator's pushbutton input. A dry contact, Form "A", relay in the receiver will provide a .5-seconds closure across the terminals when the receiver activates. A flexible wire antenna extends from the receiver's case to provide maximum radio reception.

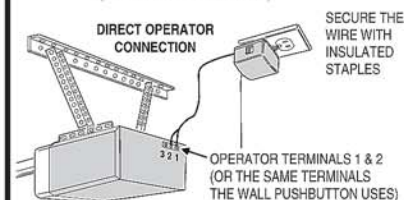
MegaCode™ receivers and transmitters do not contain a typical "coding switch". Each transmitter is pre-set at the factory to a unique code. The receiver is programmed by sending a signal from the transmitter, storing the transmitter's code into the receiver's memory. The receiver will retain its memory, even without power. The receiver will activate only from these "memorized" transmitters. Each MDR-U receiver can be programmed to activate from up to ten MegaCode™ transmitters. The learn button and learn indicator are used for entering and erasing the transmitters in the receiver's memory. The learn indicator also displays signals being received and can be used for troubleshooting.

#### CONNECT THE RECEIVER TO THE OPERATOR

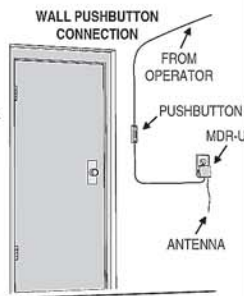
CONNECT 2-CONDUCTOR WIRE TO THE MDR-U RECEIVER RELAY OUTPUT TERMINALS



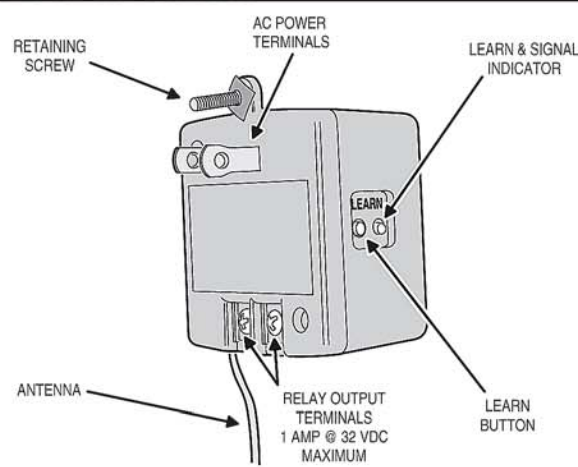
ROUTE THE WIRE AND CONNECT IT TO EITHER THE WALL PUSHBUTTON OR DIRECTLY TO THE DOOR OPERATOR (POLARITY NOT IMPORTANT)



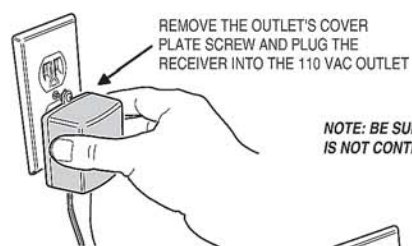
**DISCONNECT POWER TO THE GARAGE DOOR OPERATOR BEFORE PROCEEDING**  
**UL NOTE: ALL LOW VOLTAGE CLASS 2 CABLE USED WITH THE OPERATOR MUST BE UL LISTED TYPE CL2, CL2P, CL2R, OR CL2X OR OTHER CABLE WITH EQUIVALENT OR BETTER ELECTRICAL, MECHANICAL, AND FLAMMABILITY RATINGS**



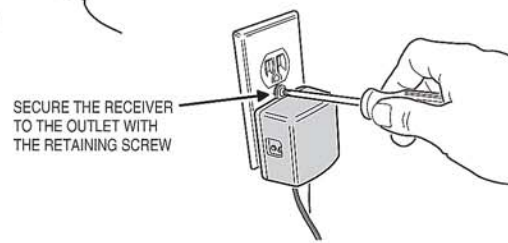
#### COMPONENT LOCATIONS



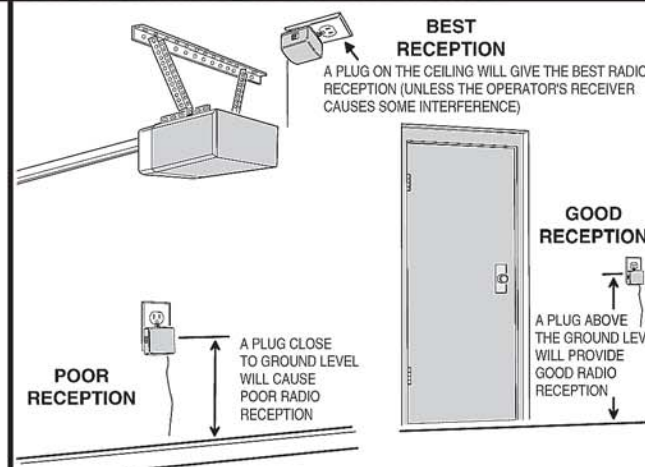
#### INSTALL THE RECEIVER



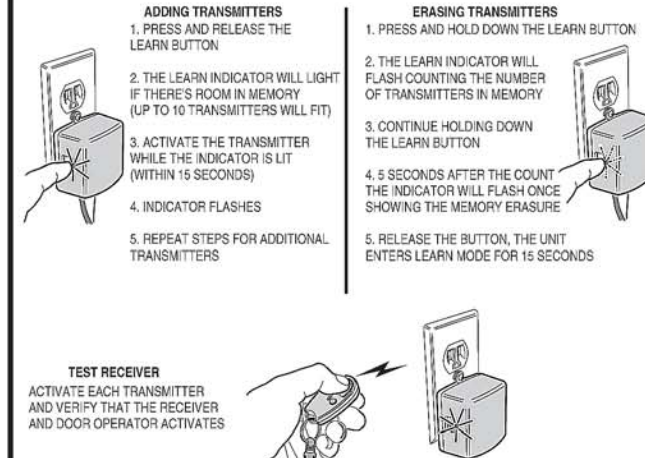
**NOTE: BE SURE THAT THE OUTLET IS NOT CONTROLLED BY A WALL SWITCH**



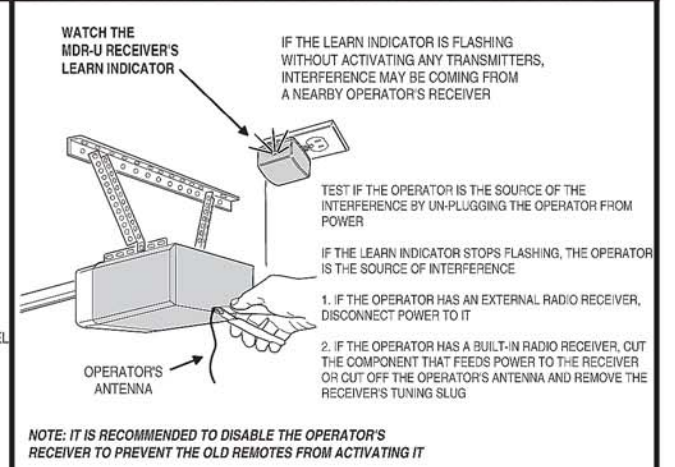
#### DETERMINE THE BEST RECEIVER LOCATION



#### PROGRAM AND TEST THE RECEIVER



#### CHECK FOR INTERFERENCE FROM OTHER RECEIVERS



#### LINEAR LIMITED WARRANTY

This Linear product is warranted against defects in material and workmanship for twelve (12) months. The Warranty Expiration Date is labeled on the product. **This warranty extends only to wholesale customers who buy direct from Linear or through Linear's normal distribution channels. Linear does not warrant this product to consumers.** Consumers should inquire from their selling dealer as to the nature of the dealer's warranty, if any. **There are no obligations or liabilities on the part of Linear Corporation for consequential damages arising out of or in connection with use or performance of this product or other indirect damages with respect to loss of property, revenue, or profit, or cost of removal, installation, or reinstallation.** All implied warranties, including implied warranties for merchantability and implied warranties for fitness, are valid only until Warranty Expiration Date as labeled on the product. **This Linear Corporation Warranty is in lieu of all other warranties express or implied.** All products returned for warranty service require a Return Product Authorization Number (RPA#). Contact Linear Technical Services at 1-800-421-1587 for an RPA# and other important details.  
**IMPORTANT !!!**  
Linear radio controls provide a reliable communications link and fill an important need in portable wireless signaling. However, there are some limitations which must be observed.  
• For U.S. installations only: The radios are required to comply with FCC Rules and Regulations as Part 15 devices. As such, they have limited transmitter power and therefore limited range.  
• A receiver cannot respond to more than one transmitted signal at a time and may be blocked by radio signals that occur on or near their operating frequencies, regardless of code settings.  
• Changes or modifications to the device may void FCC compliance.  
• Infrequently used radio links should be tested regularly to protect against undetected interference or fault.  
• A general knowledge of radio and its vagaries should be gained prior to acting as a wholesale distributor or dealer, and these facts should be communicated to the ultimate users.  
• This device complies with FCC Part 15 and Industry Canada Rules and Regulations. Operation is subject to the following two conditions: (1) This device may not cause harmful interference, and (2) this device must accept any interference received, including interference that may cause undesired operation.