

1 IMPORTANT INFORMATION

USE ONLY WITH **SERIES II** ELECTRONICS.

Older Transmitters and Receivers will not work with these new electronics. There are no Security Code Switches inside the Door Operators, Transmitters and Receivers.

⚠ WARNING

Moving Door can cause serious injury or death.

- Do Not install transmitter unless the door operator's safety reverse works as required by the door operator's manual.
- Wall control must be mounted in sight of door, at least 5 feet above floor and clear of moving door parts.
- Keep people clear of opening while door is moving.
- Do Not allow children to play with the transmitter or door operator.

If safety reverse does not work properly:

- Close door then disconnect operator using the manual release handle.
- Do Not use transmitter or door operator.
- Refer to Door and Door Operator Owner's Manuals before attempting any repairs.

Electrical Shock can cause serious injury or death.

- Power cord must be unplugged before attaching any wires.
- Be sure wire ends do not touch each other or other terminals.

If you have questions or if you need a manual, contact the distributor or manufacturer of the operator.

A different Transmitter Code is set at the factory for each **SERIES II** INTELLICODE Transmitter.

2 TO PROGRAM THE RECEIVER

Step 2-1 Locate the Learn Code Button and Radio Signal Indicator on the Power Head Receiver of your Door Operator.

Step 2-2 Press and release the Learn Code Button

Fig. 1

- The Radio Signal Indicator will blink approximately 2 times per second.

Step 2-3 Press a Transmitter Button once within 30 seconds.

- The Radio Signal Indicator stays lit - SOLID.

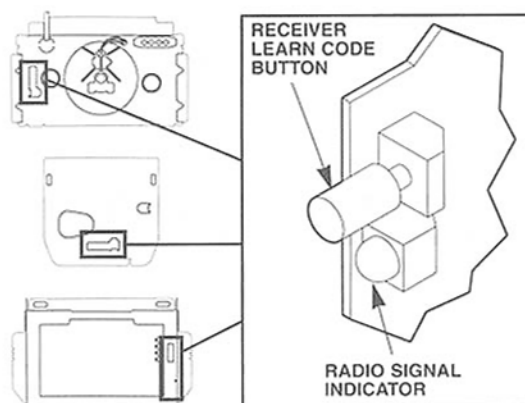


Fig. 1

Step 2-4 Press the same Transmitter Button within 30 seconds.

- Radio Signal Indicator will go out.

NOTE: If a second Transmitter Code is not confirmed within 30 seconds or if a different Transmitter Code is sent, the Radio Signal Indicator will blink approximately 4 times per second, then programming will stop. If programming stops, repeat Steps 2-2 through 2-4.

Step 2-5 Repeat Steps 2-2 through Step 2-4 for each Transmitter, Wireless Keypad or other access device to be learned.

DEK CANADA INC

1928 ST-REGIS BLVD.

DORVAL, QC

H9P 1H6

TEL: 514-685-5800

TOLL-FREE: 1-800-361-3198

FAX: 514-685-5804

www.dekcanada.com