

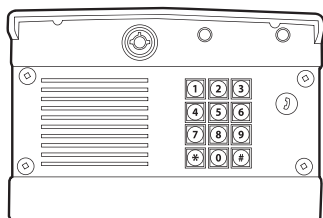
### SECURITY+

## Model GAPLM Gate Access Panel

### Overview

The Gate Access Panel (GAPLM) uses a digitally secure intercom link that allows it to control up to four gate operators and other accessories. The GAPLM is compatible with various Liftmaster Wireless Products.

### Carton Inventory



Gate Access Panel (GAPLM)



Key (2)



Bolt (4)



Washer (4)

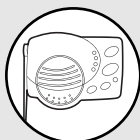


Nut (4)

### Accessory Overview



**Indoor Telephone Interface (OTIU):** The OTIU allows the user to identify which gate or door a visitor is at with Caller ID and a distinctive ring tone. A gate can be opened by dialing “\*9” on the telephone keypad.



**Portable Intercom:** The intercom allows the user to speak with visitors at the GAPLM and open the gate by holding the Remote button for 10 seconds.



**Flush Mount Intercom:** The intercom allows the user to speak with visitors and grant access.



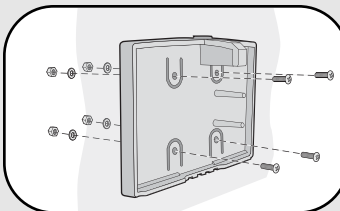
**Repeater Set:** Repeaters are used to extend the range of the GAPLM. They are recommended for use with buildings with stucco or cement walls.



**Remote Control Transmitter:** The remote control transmitter will open the gate when the numbered button is held down for 5 seconds within 75' of the GAPLM.

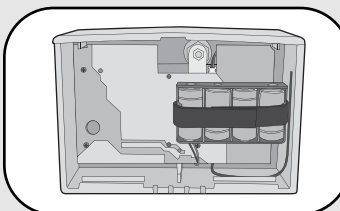
### GAPLM Installation & Assembly

#### Step 1



Choose mounting location for GAPLM. Remove the back panel and attach it to a solid surface or post.

#### Step 2



Install 4 C batteries (not provided) in the GAPLM and it will beep.

**NOTE:** To prevent damage to the circuit **DO NOT** use C size Lithium batteries.

#### Step 3

On keypad press:



#### Step 4

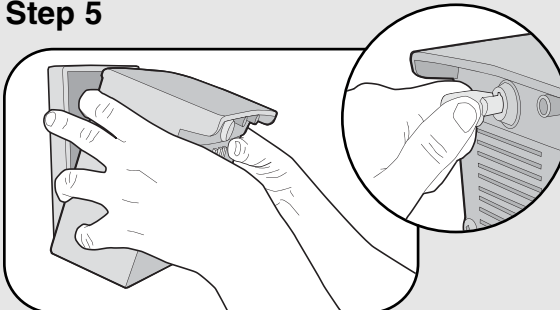
Enter 4 digit Master PIN Number. Example: 1234.



“BEEP” “BEEP”

**NOTE:** “\*” is a cancel button that will cancel any call or key sequence.

#### Step 5



Mount the GAPLM onto the back panel. Lock GAPLM with key.

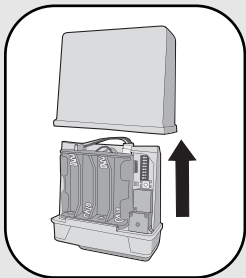
**NOTE:** Do not slam the GAPLM against the wall or the tamper sensor will activate.

If an additional GAPLM is being used see *Operation & Features: Multi-GAPLM Mode*.

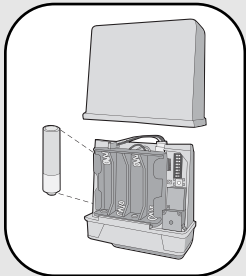
**NOTE:** If there is already an existing receiver proceed to Pre-Installed LiftMaster Receiver.

## Gate Control Unit (GCU) (not provided)

### Assemble



**Step 1:** Remove GCU cover.

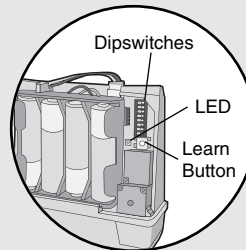


**Step 2:** Install 4 AA Alkaline batteries (not provided). (Lithium batteries recommended for colder environments.)

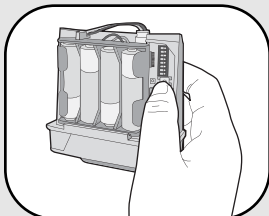
**NOTE:** This step applies only if more than one GCU is being used.

**Step 3:** Up to four GCUs can be used. Each GCU will have to have a different Identity. Set the Identity of the GCU by changing the Dipswitches as shown in the chart below.

GCU ID	Switch #1	Switch #2
1	OFF	OFF
2	ON	OFF
3	OFF	ON
4	ON	ON



### Program

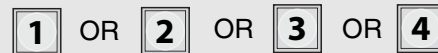


Press the Learn button on the GCU for one second. The LED will light for 20 seconds.

Within 20 seconds enter Master PIN Number on GAPLM:



Followed by GCU Identity as determined in Step 3:

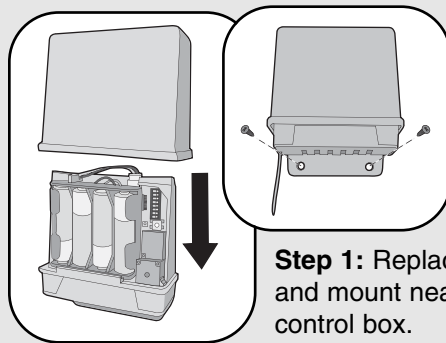


“BEEP” “BEEP”

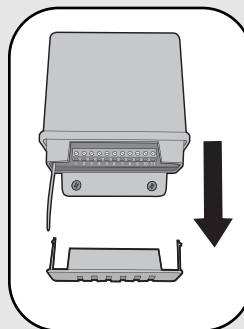
The GCU LED will blink 3 times indicating programming is successful. If error tone is heard or GCU LED emits 3 double blinks, then programming has failed.

Repeat for additional GCUs.

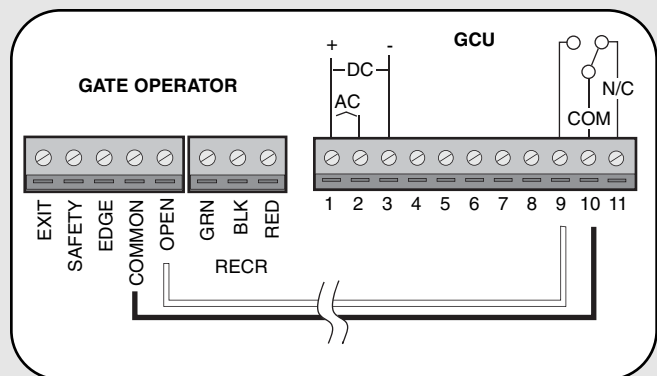
### Installation



**Step 1:** Replace GCU cover and mount near gate operator control box.



**Step 2:** Remove bottom panel of GCU. Connect Terminal 10 on GCU to Common on gate operator (shown below). Connect Terminal 9 to Cycle on gate operator (shown below).

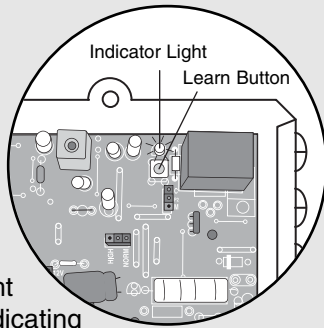


## Pre-Installed Liftmaster Receiver

### Program

**Step 1:** Pry open the front panel of the receiver case with a coin or a screwdriver.

**Step 2:** Press and release the Learn button on the receiver. The Indicator Light will light for 30 seconds indicating that receiver is in Learn Mode.



**Step 3:** Within 30 seconds enter Master PIN Number on GAPLM.

**Step 4:** Press “1”. The Indicator Light on the receiver will blink 3 times indicating programming is successful.

**NOTE:** An error tone will be heard for 3 consecutive activations only. After the third activation the GAPLM assumes that the GCU has been replaced with the receiver.

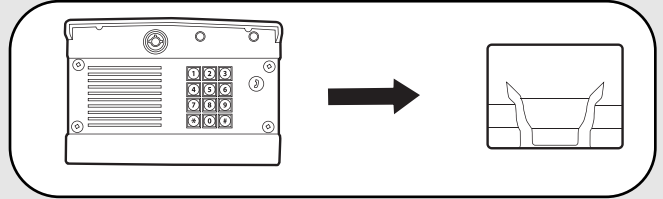
Repeat Steps 2-4 for each remote, or control device that will be used to access the Liftmaster door or gate operator.

### Erase All Control Codes

Press and hold the Learn button on the receiver until the Indicator Light turns off indicating that the receiver memory is clear (about 6 seconds).

## Programming Accessories

### Indoor Telephone Interface (OTIU)



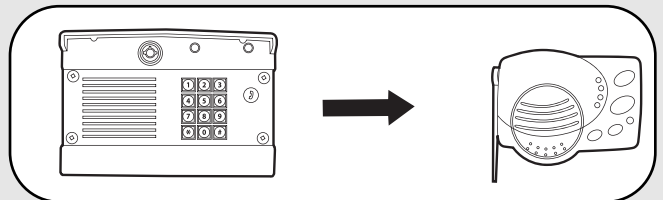
**Step 1:** On the phone connected to the OTIU, press “\*\*07” after hearing the dial tone. Hang up and Learn LED will flash for 15 seconds. If an error tone is heard it means that memory will have to be cleared (Refer to OTIU manual).

**Step 2:** Within 15 seconds enter Master PIN Number on GAPLM.

**Step 3:** Press “05” and GAPLM will beep. The OTIU will ring the telephone and Caller ID will display “Unit Learned”.

For complete installation and operating instructions refer to OTIU manual.

### Portable Intercom



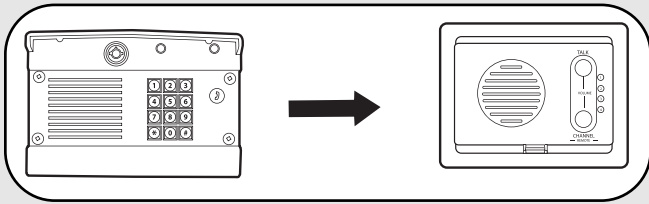
**Step 1:** Press the Learn button on the intercom until a beep is heard and release.

**Step 2:** Within 20 seconds enter Master PIN Number on GAPLM.

**Step 3:** Press “05” and GAPLM will beep. Intercom will beep indicating programming is successful. Allow 30 seconds to time-out of Learn Mode or press the “\*” to end Learn Mode.

When the Call Button is pressed on the GAPLM, the intercom will beep for 40 seconds. During this time, the intercom will ONLY connect to the GAPLM. Hold down the Talk Button on the intercom to speak to the visitor. Release the Talk button to hear the response. This will be a secure conversation and other intercoms will be locked out.

## Flush Mount Intercom



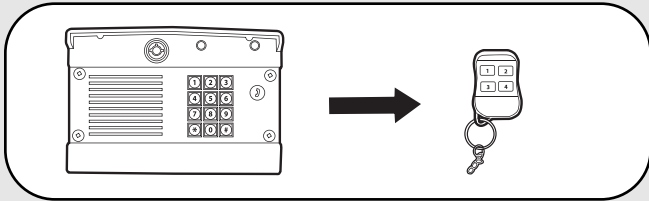
**Step 1:** Press and hold both buttons on the intercom for 3 seconds. The LEDs will flash.

**Step 2:** Within 20 seconds enter Master PIN Number on GAPLM.

**Step 3:** Press “05” and GAPLM will beep. Intercom will beep indicating programming is successful.

When the Call Button is pressed on the GAPLM, the intercom will beep for 40 seconds. During this time, the intercom will **ONLY** connect to the GAPLM. Hold down the Talk Button on the intercom to speak to the visitor. Release the Talk button to hear the response. This will be a secure conversation and other intercoms will be locked out.

## Remote Control Transmitter



Each numbered button on a remote control transmitter must be programmed separately as each button controls one of four GCU's.

**Step 1:** Enter Master PIN Number on GAPLM.

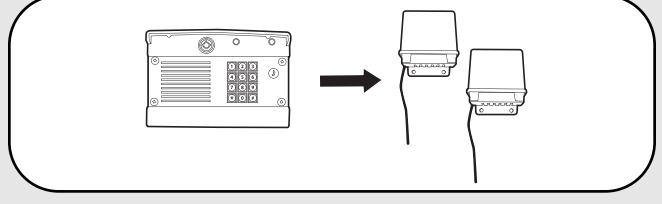
**Step 2:** Press “8”.

**Step 3:** Then enter the Gate Control Unit (GCU) Identity (1-4). If there is only one GCU, enter “1”. GAPLM will beep.

**Step 4:** Press and hold the remote control transmitter button that is to be used for that GCU. GAPLM will beep twice indicating programming is successful.

**NOTE:** Do not exceed the GAPLM maximum capacity of 16 remote control transmitters.

## Repeater Set



**Step 1:** On **ONE** repeater, set Dipswitch #1 to ON. All other Dipswitches should remain OFF.

**Step 2:** Press Learn button on both Repeaters (within 5 seconds of each other). LED will light.

**Step 3:** Within 20 seconds enter Master PIN Number on GAPLM.

**Step 4:** Press “05”.

**Step 5:** Press Call Button. The LEDs on the Repeaters will flash 3 times indicating programming is successful. Allow GAPLM 30 seconds to time-out of Learn Mode, or press the “\*” to end Learn Mode before proceeding.

## Second Repeater Set

**Step 1:** On **ONE** repeater, set Dipswitch #1 to ON. All other Dipswitches should remain OFF.

**Step 2:** Press Learn button on both Repeaters (within 5 seconds of each other). LED will light.

**Step 3:** Press Learn button on **ONE** of the **first** set of Repeaters. LED will light.

**Step 4:** The LED's on the second set of Repeaters will flash three times indicating programming is successful.

### NOTES:

- If adding Repeaters to existing network, all accessories that have been programmed to the GAPLM will have to be cleared and reprogrammed.
- When using the OTIU only one set of Repeaters may be used. When using an Intercom two sets of Repeaters may be used.

For complete installation and operating instructions refer to Repeater manual.

## Operation & Features

### Open Gate

To open a gate enter any valid PIN Number on GAPLM.

For multiple GCU's, enter the PIN Number followed by the GCU Identity (1-4).

For a Remote Control Transmitter, press the corresponding button for 5 seconds (within 75' of GAPLM).

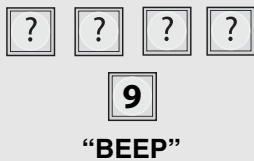
On intercom, press the Remote button while talking to a visitor. At other times, hold the intercom's Remote button for 10 seconds, to activate the Primary GCU.

On the OTIU, dial "\*9" on the telephone.

### Adding PIN Numbers

The GAPLM can support up to 50 PIN Numbers.

Enter Master PIN Number on GAPLM:



Enter new PIN Number:



If the new PIN Number applies only to a certain GCU, enter the PIN Number followed by the GCU Identity (1-4). The result will be a five digit PIN Number (example: 12341).

### Temporary PIN Numbers

A temporary PIN Number can be used only once within a 24 hour period.

Enter Master PIN Number on GAPLM:



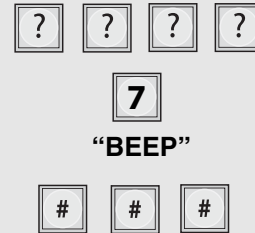
Enter temporary PIN Number:



If the temporary PIN Number applies only to a certain GCU, enter the PIN Number followed by the GCU Identity (1-4). The result will be a five digit PIN number (example: 12341).

### Erasing PIN Numbers

Enter Master PIN Number on GAPLM:



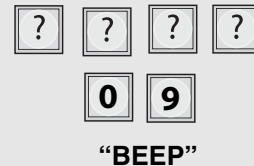
Enter PIN Number you want to remove:



A triple beep indicates a PIN Number has been entered that does not exist. The Master PIN Number cannot be deleted.

### Change Master PIN Number

Enter Master PIN Number on GAPLM:

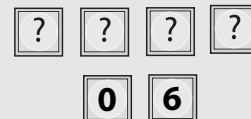


Enter new Master PIN Number:

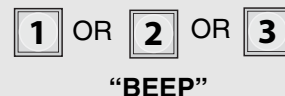


### Speaker Volume

Enter Master PIN Number on GAPLM:



Enter one of the following volume levels:



Default setting is 2.

## Microphone Sensitivity

Enter Master PIN Number on GAPLM:

[?] [?] [?] [?]

[0] [7]

Enter one of the following sensitivity levels:

[1] OR [2] OR [3]

“BEEP”

Default setting is 2.

## Keypad Brightness

When it is dark, the panel will light when it detects movement (up to 5') or when a button is pressed (This feature is disabled in Power-save Mode).

Enter Master PIN Number on GAPLM:

[?] [?] [?] [?]

[0] [8]

Enter one of the following brightness levels:

[1] OR [2] OR [3]

“BEEP”

Default setting is 2.

## Alternate Channel Selections

The GAPLM can be set to one of three channels to prevent range-reducing interference from conflicting radio transmitters. Any accessories programmed to the GAPLM will have to have memory cleared and be reprogrammed.

Enter Master PIN Number on GAPLM:

[?] [?] [?] [?]

[5] [5]

Enter one of the following channels:

[1] OR [2] OR [3]

“BEEP”

Default setting is Channel 2.

**NOTE:** If the Channel is switched from default all items will need to be erased and reprogrammed.

## Vacation Mode

The GAPLM can be put into a Sleep Mode to conserve power and will only respond when the Master PIN Number is entered into GAPLM.

Enter Master PIN Number on GAPLM:

[?] [?] [?] [?]

[5] [2]

To exit Vacation Mode:

Enter Master PIN Number on GAPLM:

[?] [?] [?] [?]

[5] [3]

## Party Mode

To keep gate open during a party or activity so the gate will not have to open with each guest, the GAPLM can be programmed to remain open until it is cycled close.

**NOTE:** To use this feature the GCU must be connected to an external 12V power supply (battery power cannot sustain long activations of the GCU relay).

Enter Master PIN Number on GAPLM:

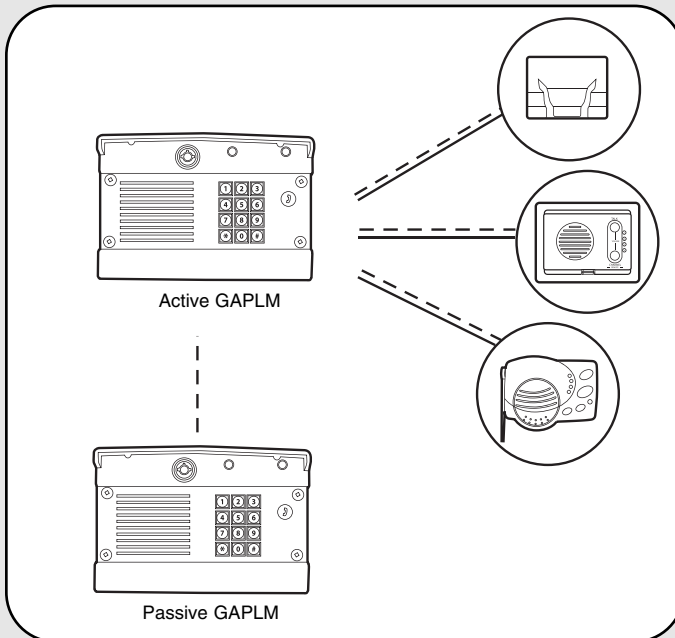
[?] [?] [?] [?]

[5] [4]

To close gate and exit Party Mode, cycle the gate by entering a PIN Number or by pressing the button on a remote or intercom.

## Multi-GAPLM Mode

The GAPLM can be set to Passive Mode to work with multiple GAPLM's. The Passive GAPLM will become an accessory to the Active GAPLM. Any accessories that have been taught to the Passive GAPLM will have to have memories cleared and be reprogrammed to the Active GAPLM.



On the GAPLM that is to be Active, enter the Master PIN Number:

? ? ? ?

0 5

“BEEP”

Within 1 minute, on the GAPLM that is to be Passive, enter the Master PIN Number:

? ? ? ?

5 6

“BEEP”

An error code can be heard if programming is unsuccessful and GAPLM will return to Active Mode. To exit Passive Mode and return to Active Mode, enter PIN Number, followed by “57”.

## Multi-GAPLM Default GCU Setting

The Passive GAPLM defaults to activating GCU #2 when it is activated by a PIN Number entered on that keypad, a near-by Remote Control Transmitter, or if the Call button is pressed.

To have the Passive GAPLM activate GCU #3:

Enter Master PIN Number on Passive GAPLM:

? ? ? ?

5 8

“BEEP”

To have the Passive GAPLM activate GCU #4:

Enter Master PIN Number on Passive GAPLM:

? ? ? ?

5 9

“BEEP”

## Battery

The AA batteries (not provided) in the GCU will last up to a year and a half depending on use (Lithium batteries recommended for colder environments.) If batteries are low, the intercom will beep three times after it is activated.

The C batteries (not provided) in the GAPLM will last up to a year and a half with all functions enabled. Not activating remote control transmitters and enabling the Power-save Mode can extend battery life up to five years.

**NOTE:** To prevent damage to the circuit **DO NOT** use C size Lithium batteries.



## PIN Number Functions

PIN number	Function
01	Self Test Mode
03	Power-save Mode
04	Exit Power-save Mode
05	Enable GAPLM Learn Mode
06 (1-3)	GAPLM Volume Control
07 (1-3)	GAPLM Microphone Sensitivity
7 PIN	Removing PIN Numbers
08 (1-3)	GAPLM Brightness Control
8 (1-4)	Activating a Remote Control
Remote (1-4)	Transmitter
09 ### PIN	Change the Master PIN Number
9 PIN	Add PIN Numbers
9 PIN (1-4)	Add PIN Numbers with GCU restrict
51 PIN	Add Temporary PIN Number
51 PIN (1-4)	Add Temporary PIN Number with GCU restrict
52	Vacation Mode
53	Exit Vacation Mode
54	Party Mode
55 (1-3)	Alternate Channel Set
56	Place GAPLM in Passive Mode
57	Place GAPLM back to Active Mode
58	Default GCU #3 to the Passive MHGAPLM
59	Default GCU #4 to the Passive MHGAPLM

## Troubleshooting

### The gate will not open and the GAPLM beeps twice.

Ensure that the GCU has power. Ensure that the GAPLM has been programmed to the GCU.

### The GAPLM will not program a PIN Number.

The PIN Number matches the first four digits of the factory's reset code. Choose another number.

### Intercom cannot be programmed.

The GAPLM has an automatic "Lock-Out" feature. Enter the Master PIN Number followed by "05" to enter Learn Mode for one minute. Within 20 seconds, hold down both buttons on a Flush Mount Intercom or the Learn Button on an Access Portable Intercom for 1 second. You should hear a beep within 10 seconds as Intercom learns network code. After hearing double beep, press the Call Button on GAPLM to ensure intercoms have been programmed.

### GCU does not function.

Ensure GCU has been programmed to the GAPLM (see *GCU: Program*). If GAPLM beeps 4 times it means the GCU was not programmed to the GAPLM. If GCU has Identity of 2, 3, or 4 make sure the corresponding Identity is set with Dipswitches 1 and 2 in GCU (see *GCU Installation*).

### Manufacturer's Reset Code is needed to reset GAPLM.

The GAPLM's serial number is printed on the inside of the GAPLM's back panel.

Call Technical Support at 1-800-528-2806 for Reset Code. You MUST have GAPLM's serial number to receive the Reset Code. The GAPLM will clear its memory and can be reprogrammed.

### An error tone is heard when GCU is activated.

The GAPLM is not communicating with GCU. The GCU may be out of range or not programmed correctly. If GCU and GAPLM function when close together, the GCU may need to be mounted higher off the ground or on a different surface. Metal, trees, or masonry can reduce range.

If GAPLM and GCU do not function when close together, the GCU has not been programmed to the GAPLM. Check the GCU's Identity and reprogram it (see *GCU Assemble and Program*).

### There is a buzzing noise or failed connection when used with the OTIU.

Move the OTIU away from computer or phone. Changing the channel of OTIU and GAPLM can also solve problem (see *Operation & Features: Alternate Channel Selections*).

### When used with OTIU only first couple of words from caller is heard.

Lower GAPLM microphone sensitivity (see *Operation & Features: Microphone Sensitivity*).

### System has a very short range.

Interference from a conflicting 900Mhz radio transmitter can affect range. Change the channel of GAPLM (see *Operation & Features: Alternate Channel Selections*).

When used in buildings with stucco or cement walls, the range is greatly reduced. Repeaters can be used close to the building to solve this problem.

NOTICE: To comply with FCC and/or Industry Canada rules (IC), adjustment or modifications of this receiver and/or transmitter are prohibited, except for changing the code setting or replacing the battery. THERE ARE NO OTHER USER SERVICEABLE PARTS.

Tested to Comply with FCC Standards FOR HOME OR OFFICE USE. Operation is subject to the following two conditions: (1) this device may not cause harmful interference, and (2) this device must accept any interference received, including interference that may cause undesired operation.



***HOW TO ORDER REPAIR PARTS***

**DEK CANADA INC**

1928 ST-REGIS BLVD.

DORVAL, QC

H9P 1H6

TEL: 514-685-5800

TOLL-FREE: 1-800-361-3198

FAX: 514-685-5804

**[www.dekcanada.com](http://www.dekcanada.com)**

**WHEN ORDERING REPAIR PARTS  
PLEASE SUPPLY THE FOLLOWING INFORMATION:**

<b>PART NUMBER</b>	<b>DESCRIPTION</b>	<b>MODEL NUMBER</b>
--------------------	--------------------	---------------------