

CHAMBERLAIN®

# LiftMaster®

## PROFESSIONAL

FOR USE WITH GARAGE DOOR OPENERS  
MANUFACTURED AFTER JANUARY 1, 1995.

This door control contains a motion detector that will automatically turn on the light when it detects a person entering the garage. This feature can be easily turned off for extended work light use.



Locate the door control within sight of the door at a minimum height of 5 feet (1.5 m) where small children cannot reach, and away from all moving parts of the door and door hardware.

### INSTALLATION

The door control is typically attached directly to the wall. For pre-wired installations (as in new home construction), it can be mounted to a standard single gang box. If installing the door control adjacent to existing door controls, be sure the detector switch is accessible.

1. Disconnect power to the garage door opener.
2. Strip 1/4" (6 mm) of insulation from one end of the bell wire and connect to the two screw terminals on the back of the door control as follows: red/white wire to 1 and white wire to 2.

**NOTE:** After installation, the green indicator light behind the push bar cover will indicate proper connection.

3. Remove the push bar cover by gently prying off the top edge with a screwdriver. Fasten with 6ABx1-1/4" self-tapping screws (standard installation) or 6-32x1" machine screws (pre-wired installation) as follows:

- **(Standard Installation ONLY)** Drill pilot holes and install bottom screw, allowing 1/8" (3 mm) to protrude above the wall surface.
- Position bottom of door control on screw head and slide down to secure. Adjust screw for snug fit.
- Install top screw. Do NOT overtighten, you may damage the plastic housing.

4. **(Standard Installations ONLY)** Run bell wire up wall and across ceiling to motor unit. Use insulated staples to secure wire to wall and ceiling in several places. Do NOT pierce wire with a staple, this will create a short or open circuit.

5. Strip 7/16" (11 mm) of insulation from the end of the bell wire.

6. Connect bell wire to terminals as follows:

- **Quick Connect Terminals:** Red/white wire to red terminal and white wire to white (Figure 1).
- **Screw Terminals:** Red/white to 1 and white to 2 (Figure 2).

7. Reconnect power to the garage door opener.

8. Replace the cover by inserting the top tabs and snapping it into place. Test the wall control to ensure proper operation.

**NOTE:** The automatic light feature will become functional 6-1/2 minutes after power is restored.

## Model 98LM

### Motion Detecting Door Control Panel

#### OWNERS INSTRUCTIONS

### ⚠ WARNING

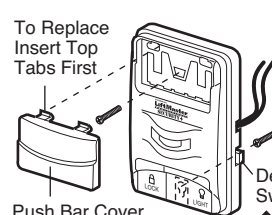
To prevent possible SERIOUS INJURY or DEATH from electrocution:

- Be sure power is not connected BEFORE installing door control.
- Connect ONLY to 24 VOLT low voltage wires.

To prevent possible SERIOUS INJURY or DEATH from a closing garage door:

- Install door control within sight of garage door, out of reach of children at a minimum height of 5 feet (1.5 m), and away from all moving parts of door.
- NEVER permit children to operate or play with door control push buttons or remote control transmitters.
- Activate door ONLY when it can be seen clearly, is properly adjusted, and there are no obstructions to door travel.
- ALWAYS keep garage door in sight until completely closed. NEVER permit anyone to cross path of closing garage door.

#### STANDARD WALL MOUNT



#### PRE-WIRED INSTALLATION

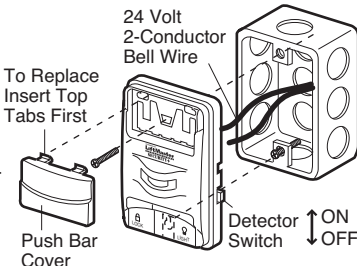
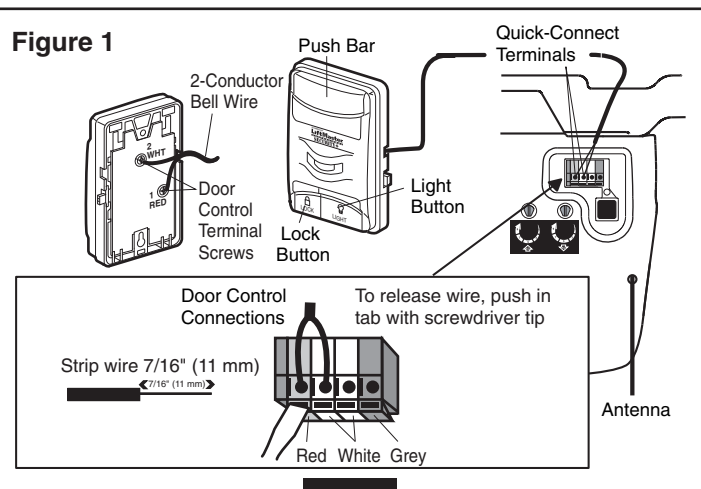
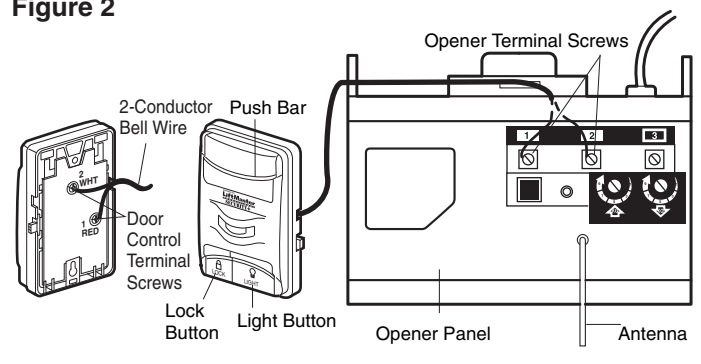


Figure 1



OR

Figure 2



## OPERATION

**Door Control Push Bar:** Press to open or close the door. Press again to reverse the door during the closing cycle, or to stop the door while it is opening.

**Light Feature:** Press the Light button to switch the opener light on or off. When the door is opened or closed, the light will remain on for 4-1/2 minutes. Press the Light button to turn it off sooner. The Light button will not control the opener light when the door is in motion. When using the opener lights as working lights, we recommend that you first disable the motion sensor. See *Automatic Light Override Feature*, below.

When used with openers manufactured after December 1, 1999, (check the date on the opener panel) the 4-1/2 minute interval can be changed to 1-1/2, 2-1/2, or 3-1/2 minutes as follows: Press and hold the Lock button until the light blinks (about 10 seconds). A single blink indicates that the timer is reset to 1-1/2 minutes. Repeat the procedure and the light will blink twice, resetting the timer to 2-1/2 minutes. Repeat again for a 3-1/2 minute interval, etc., up to a maximum of four blinks and 4-1/2 minutes.

**Automatic Light Feature:** The opener light will turn on automatically when a person enters the garage. When a person walks in front of the door control, the opener light will come on for five minutes, then shut off. This feature works by detecting body heat. It is more sensitive in front of the door control than at its sides, and works better as a person moves closer. It may not work in temperatures around 100°F (38°C).

To disable this feature, slide the Detector Switch on the right side of the door control down (off).

**Special note for older garage door openers:** *If this door control is installed on an opener manufactured from January 1, 1995 to December 1, 1999, the following difference may apply: If the light is on when the opener is actuated, the light may go off for a moment, then turn on again as the detector senses you.*

**Automatic Light Override Feature:** We recommend that you disable the motion sensor when using the opener lights as working lights. Otherwise, they will turn off automatically if you are working beyond the sensor's range. Slide the Detector Switch on the right side of the door control down (off), then press the light button to control the lights.

**Lock Feature:** Designed to prevent operation of the door from portable remote controls. However, the door will open and close from the Door Control push bar and from the Keylock and Keyless Entry accessories.

**To activate:** Press and hold the Lock button for 2 seconds. The push button indicator light will flash as long as the lock is on.

**To turn off:** Press and hold the Lock button again for 2 seconds. The indicator light will stop flashing. Normal operation will resume. The Lock feature will also turn off whenever the Smart button on the opener end panel is activated.

NOTICE: To comply with FCC and/or Industry Canada (IC) rules, adjustment or modifications of this receiver and/or transmitter are prohibited, except for changing the code setting or replacing the battery. THERE ARE NO OTHER USER SERVICEABLE PARTS.

Tested to Comply with FCC Standards FOR HOME OR OFFICE USE. Operation is subject to the following two conditions: (1) this device may not cause harmful interference, and (2) this device must accept any interference received, including interference that may cause undesired operation.

**FOR SERVICE DIAL OUR TOLL FREE NUMBER:  
1-800-528-9131**

***HOW TO ORDER REPAIR PARTS***

**DEK CANADA INC**

1928 ST-REGIS BLVD.

DORVAL, QC

H9P 1H6

TEL: 514-685-5800

TOLL-FREE: 1-800-361-3198

FAX: 514-685-5804

**[www.dekcanada.com](http://www.dekcanada.com)**

**WHEN ORDERING REPAIR PARTS  
PLEASE SUPPLY THE FOLLOWING INFORMATION:**

<b>PART NUMBER</b>	<b>DESCRIPTION</b>	<b>MODEL NUMBER</b>
--------------------	--------------------	---------------------