

CHAMBERLAIN®

# LiftMaster®

## PROFESSIONAL

### ⚠ WARNING

To prevent possible SERIOUS INJURY or DEATH from a closing garage door:

- Activate door **ONLY** when it can be seen clearly, is properly adjusted, and there are no obstructions to door travel.
- **ALWAYS** keep garage door in sight until completely closed. **NEVER** permit anyone to cross path of closing garage door.

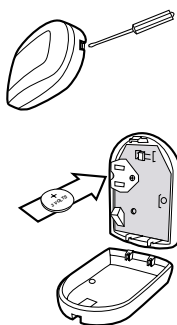
**NOTE:** Because radio control devices are inherently susceptible to RF interference, this product should **NOT** be used as a stand-alone security device. This product is considered a monitoring and notification device **ONLY**, and as such, should not be used as a substitute for a dedicated home security system.

To ensure that your Garage Door Monitor continues to operate properly, the following checks should be performed on a monthly basis:

- Check that the sensor is mounted properly on the garage door (see *Mounting the Sensor* section of this manual.)
- Ensure the 3 volt lithium battery is installed properly.
- Check to see that the receiver system is plugged into a wall outlet and the jack is properly connected to the back of the receiver. Make sure the antenna is straight and not in contact with any metal objects.
- Check that the receiver is properly recognizing sensor signals (see *Troubleshooting* section of this manual.)

### INSTALLING THE BATTERY IN THE GARAGE DOOR INDICATOR SENSOR

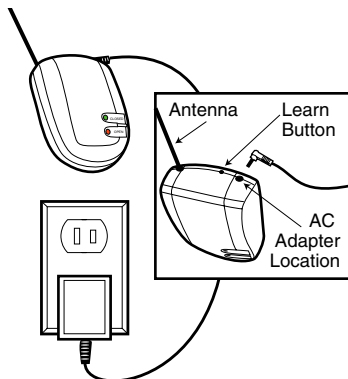
1. Place the screw driver blade **on** the tab at the end of the case and gently press down and in toward the case.
2. Insert the the lithium battery into the battery clip with the + (positive) side face up.
3. Push the case back together tightly by inserting the top hooks into the back cover, then snap shut the bottom of the case.



**NOTE:** It is normal to hear a rattle from the tilt switch in the sensor when tilted or rotated to another position.

### INDOOR RECEIVER SETUP

1. Plug the AC adapter into any standard 110 volt AC electrical wall outlet and the small plug into the back of the indoor receiver.
2. The receiver has a 9" antenna wire which comes out the back. The antenna should be straight and not touching metal.



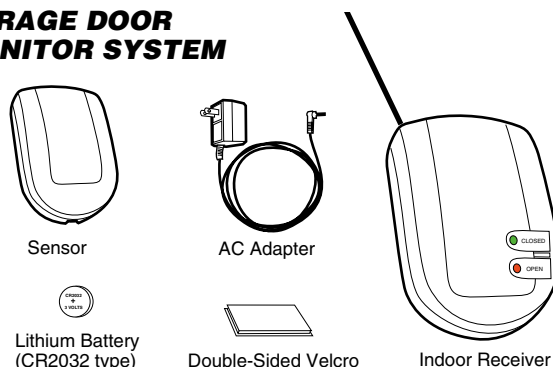
## Garage Door Monitor

Models 915LMC • 916LMC • 2C507-2

### Know when your garage door is open or closed!

Thank you for purchasing the LiftMaster Garage Door Monitor. Monitor the status of your garage door from inside your home. No longer will you have to run downstairs or go outside just to see if you or your children have left the garage door open.

### GARAGE DOOR MONITOR SYSTEM



### PRE-INSTALLATION SYSTEM TEST

1. The sensor and receiver are pre-matched (programmed) at the factory. Test the system by flipping the sensor over while it is a few feet away from the receiver. The receiver will show a green light for closed when the sensor is face up in the vertical position with the **round end** of the case pointing down (Figure 1). The red light will flash when the sensor is face down in the horizontal position (Figure 2).
2. If the green or the red receiver lights do not come on, or do not react as described, see the Troubleshooting or Learning section of these instructions.

Figure 1

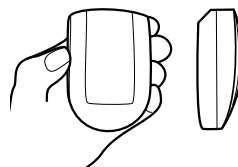
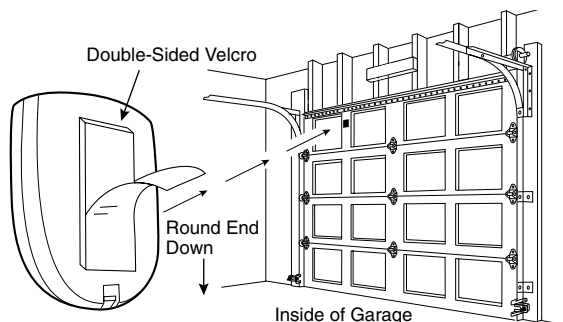


Figure 2



### MOUNTING THE SENSOR

Attach the sensor to the inside of the garage door using the double-sided velcro. Mount the sensor near the top of the garage door for best results. The **round end** of the case should be pointing down when the garage door is closed.



## GARAGE DOOR MONITOR OPERATION

When the receiver is powered up, both red and green LED's will blink once. The receiver will then show a solid green LED until it receives a signal from a programmed sensor. The receiver will display the current status of the programmed door sensor. If no door sensor(s) is programmed to the receiver, the green and red LED will flash simultaneously. See Learning section.

The sensor sends a closed signal when the garage door is closed (vertical) and an open signal as the sensor changes to open (horizontal) position.

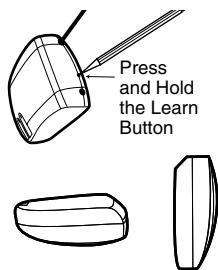
Up to 4 door mounted sensors will work in conjunction with one receiver.

The red LED will blink once every half-second if one or more of the programmed sensors are not in the closed position. The green LED comes on steady only when all the programmed sensors are in the closed position.

**NOTE:** The system will sometimes take a few seconds to send a signal. The sensor updates the receiver by transmitting an open or closed signal every few minutes.

## LEARNING MORE THAN ONE SENSOR(S)

1. Door must be closed and the green LED on steadily.
2. Press and hold the learn button for 2 seconds, the receiver will enter the learn mode. The green LED will blink on and off in 1/2 second increments.
3. The additional sensor(s) must be moved from a vertical position to a horizontal position or vice versa.
4. Both green and red LED's will turn on for 1 second to indicate a successful learn. Upon success, the receiver immediately exits the learn mode and returns to normal operation.
5. If no signal is received within 30 seconds, the receiver will exit the learn mode and return to normal operation.



## ERASING OR CLEARING THE MEMORY

1. Unplug the small plug from the AC adapter on the indoor receiver.
2. Make sure the AC adapter is plugged into a wall outlet.
3. To erase the memory of all programmed sensors, press and hold the learn button while plugging the small plug on the AC adapter into the indoor receiver.
4. Both red and green LED's will blink simultaneously. This also indicates that no sensor(s) are in memory.
5. Proceed to Step 2 of *Learning More Than One Sensor* to program the sensor to the receiver.

NOTICE: To comply with FCC and/or Industry Canada (IC) rules, adjustment or modifications of this receiver and/or transmitter are prohibited, except for changing the code setting or replacing the battery. THERE ARE NO OTHER USER SERVICEABLE PARTS.

Tested to Comply with FCC Standards FOR HOME OR OFFICE USE. Operation is subject to the following two conditions: (1) this device may not cause harmful interference, and (2) this device must accept any interference received, including interference that may cause undesired operation.

## TROUBLESHOOTING

The sensor battery must be replaced every year to assure consistent operation. Flashing of the red and green LED's in a special sequence normally indicates intermittent operation or a dead battery.

**Loss of signal:** The Sensor sends a signal periodically to synchronize to the receiver. Should the receiver not receive the signal in approximately 20 minutes, the red and green LED's will blink as follows. The green LED will blink once, then the red LED will blink one to four times depending upon the sensor number. This indicates the receiver has not received the signal from this sensor for over 20 minutes and therefore requires attention.

If replacing the battery does not rectify the issue, move the receiver into the garage for additional troubleshooting. If the monitor works flawlessly in close proximity, the sensor(s) signal is being either blocked or interfered with in the previous location and may require placement in a room closer to the garage door(s).

### Garage Door Monitor system just installed:

The sensor and receiver set are factory coded prior to shipment and should work out of the package. If you encounter a situation where the sensor and receiver work properly upon initial installation, but show a loss of signal after 20 minutes you may have an additional factory code in the receivers memory. In this instance, the receiver will then appear to be unresponsive to the sensor. In this instance, do the following:

1. Clear Receiver Memory – See *Erasing or Clearing the Memory* section. Upon clearing memory, the receiver will power up and show simultaneously flashing green and red LED's – this indicates that memory is cleared.
2. Proceed to Step 2 of *Learning More Than One Sensor*. Note that the procedures to learn 1 sensor or multiple sensors are the same.

If the receiver is still showing a loss of signal after following the above procedure, then the receiver is located too far away from the sensor. Relocate the receiver closer to the sensor.

### Garage Door Monitor suddenly malfunctions after working properly:

The sensors battery power is low. Replace the battery.

## OPTIONAL ACCESSORIES

You can purchase additional sensors if you have more than one garage door. The receiver will learn up to 4 sensors and the red light will blink if any one of the garage doors is open.

ITEM	PART #
Sensor	916LMC
Indoor Receiver	2C507-2
12 Volt AC Adapter	2C508-2

## Specifications:

### Sensor

Battery:	Lithium Type 2032. 1 year life.
Temperature:	-18°F to 140°F (-25°C to 60°C).
Codes:	254 randomly set codes.

### Receiver

Power Supply:	12 volt DC, 50 mA.
Temperature:	14°F to 122°F (-10°C to 50°C).
Codes:	Learns codes of up to 4 sensors

***HOW TO ORDER REPAIR PARTS***

**DEK CANADA INC**

1928 ST-REGIS BLVD.

DORVAL, QC

H9P 1H6

TEL: 514-685-5800

TOLL-FREE: 1-800-361-3198

FAX: 514-685-5804

**[www.dekcanada.com](http://www.dekcanada.com)**

**WHEN ORDERING REPAIR PARTS  
PLEASE SUPPLY THE FOLLOWING INFORMATION:**

<b>PART NUMBER</b>	<b>DESCRIPTION</b>	<b>MODEL NUMBER</b>
--------------------	--------------------	---------------------