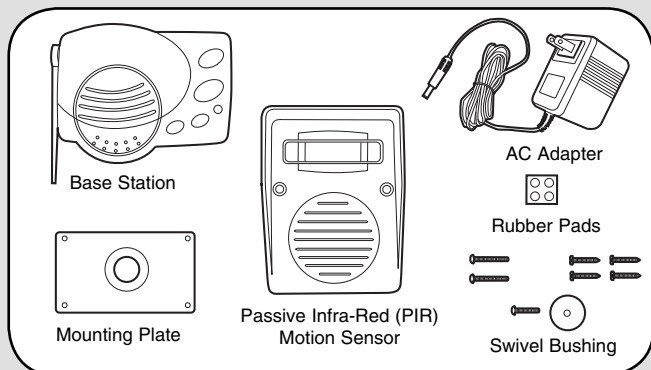


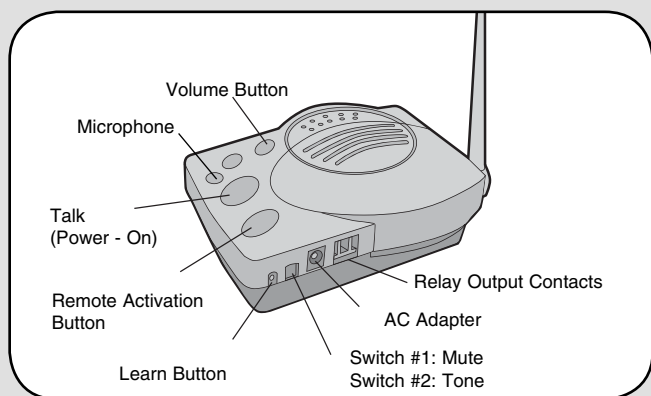
Overview

The Alert can be used to monitor motion in up to 8 locations up to 1000' from the Base Station. The Passive Infra-Red sensor detects movement of people and vehicles, while allowing small animals to pass through undetected. When the PIR Motion Sensor detects movement a signal is sent to the Base Station which alerts the user with sounds and lights. The PIR Motion Sensor has a built-in microphone that lets you hear what is going on outside and speak with a person on the other end. The Alert can also remotely control a low voltage electrical device near the PIR Motion Sensor like a light or a camera. The Alert system is compatible **ONLY** with the Models PIRV400R and AOSV Motion Sensors.

Carton Inventory



Operation & Features



Intercom Feature: When PIR Motion Sensor has detected motion, the Base Station will allow you to listen through the PIR Motion Sensor for 10 seconds. If you wish to talk to the person on the other end, hold down the Talk button and speak, releasing it to hear.

⚠ WARNING

To prevent possible **SERIOUS INJURY** or **DEATH** from electrocution, outputs are suitable **ONLY** for controlling low voltage devices, 24V max, ac or dc.

Volume: Pressing the Volume button repeatedly will cycle through volume levels.

Mute: To temporarily mute Base Station, hold the Volume and Talk buttons down for three seconds. The Base Station will reactivate after one hour, or by pressing the Talk button.

Remote Button: If there is an accessory device connected to the relay on the PIR Motion Sensor, it can be activated by pressing the Remote button within 30 seconds of the signal from the alert buzzer.

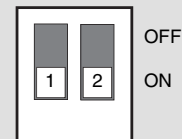
On/Off: To turn Base Station OFF hold down the Volume button until a beep is heard and light goes out. To turn Base Station ON press the Talk button.

Switch #1:

OFF	Speaker Muted
ON	Speaker On (Default)

Switch #2:

OFF	Long Beep
ON	Short Beep (Default)



Battery: The AA Alkaline batteries (not provided) will last up to 2 years depending on use (Lithium batteries recommended for colder environments). If PIR Motion Sensor batteries are low Base Station will emit three high-pitch beeps every ten minutes. If Base Station batteries are low it will emit two high-pitch beeps.

Clear Memory: Press and hold the Learn button on the Base Station until 3 beeps are heard. If PIR Motion Sensor signals while Learn button is pressed, repeat the procedure.

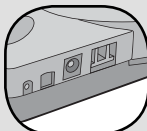
Programming Additional PIR Motion Sensors:

Each Base Station can learn the code of up to 8 PIR Motion Sensors, responding with multiple buzzes. To program additional PIR Motion Sensors see Step 6.

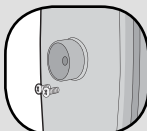
Advanced Features: Both the PIR Motion Sensor and Base Station have relays which can activate other electrical devices. The accessory device will need a separate power supply.

NOTE: Output switching capacity is low voltage (24V max, ac or dc).

Base Station: The relays can be used to activate louder alarm bells, lights, cameras, or other accessories.

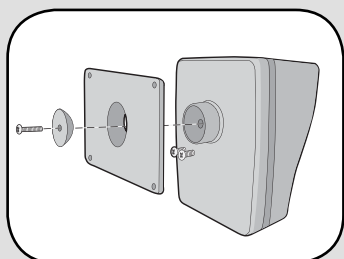


PIR Motion Sensor: The relays will only activate when the remote button is pressed on the Base Station. To prevent access to these relays flush mount the PIR Motion Sensor.



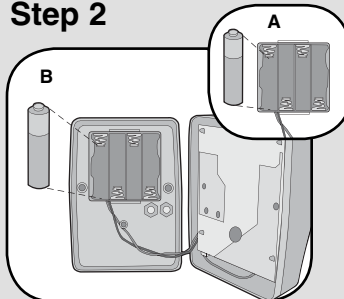
PIR Motion Sensor Assembly & Test

Step 1



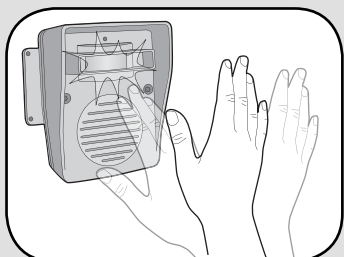
Connect PIR Motion Sensor box to mounting plate with silver screw. Tighten screw until PIR Motion Sensor stays in place when repositioned.

Step 2



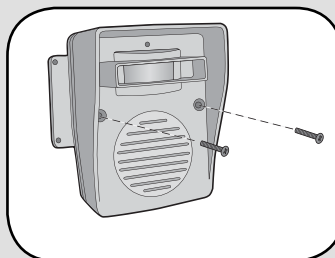
- A** Install 4 AA Alkaline batteries (not provided). (Lithium batteries recommended for colder environments.)
- B** Ensure batteries do not touch circuit board.

Step 3



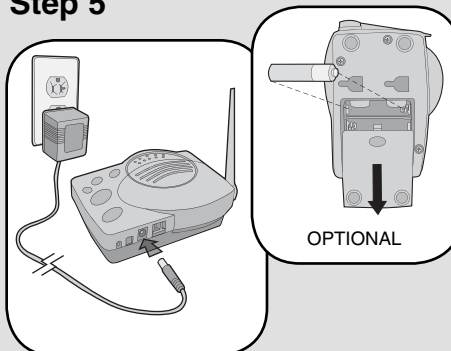
Test PIR Motion Sensor by waving hand in front of sensor. Test light should flash after several seconds.

Step 4



Secure cover with the two large black screws.

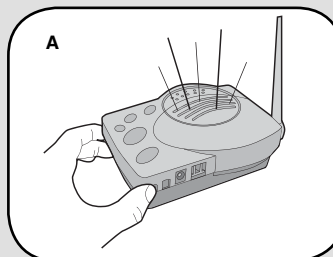
Step 5



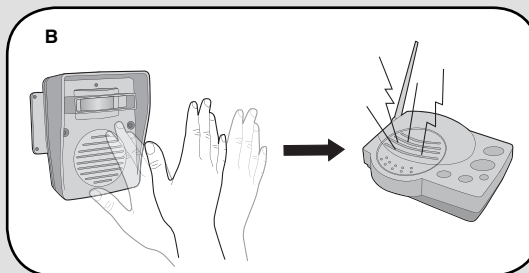
Plug in Base Station. Adhere rubber pads to bottom. 4 AA Alkaline batteries (not provided) are optional in case of power failures.

Programming PIR Motion Sensor to Base Station

Step 6



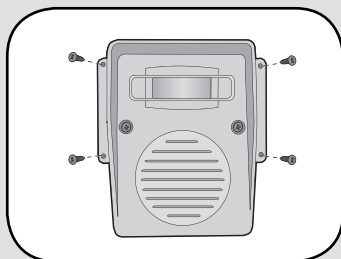
- A** Ensure that Base Station and PIR Motion Sensor are in close proximity to each other. Press and release learn button on Base Station. Buzzer will sound.



- B** Within 5 seconds, wave hand in front of PIR Motion Sensor. Test light will illuminate and Base Station will activate with static and feedback after several seconds.

PIR Motion Sensor Installation

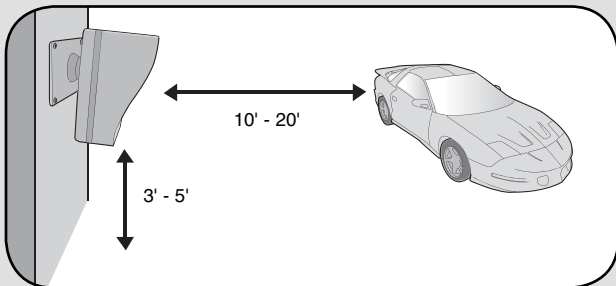
Step 7



Mount PIR Motion Sensor vertically on solid surface a few feet off the ground and within 1000' of Base Station. Unit should be able to swivel as needed.

NOTE: Do not mount PIR Motion Sensor in direct sunlight, near moving tree branches, or in the path of a sprinkler system.

Vehicle Alert Installation: For cars, the best mounting position is about 4' high, between 10-20' back, and angled to see the back of car after passing the sensor.



Troubleshooting

The Alert does not function.

Check batteries in PIR Motion Sensor. Ensure Base Station has power. Ensure PIR Motion Sensor is programmed to Base Station.

The Alert is not getting expected transmission range.

Ensure Base Station antenna is vertical and keep PIR Motion Sensor away from trees and metal objects. Ensure Base Station is in clearest possible range of PIR Motion Sensor. The less objects between devices, the longer the range.

Base Station is not very loud.

Adjust the volume of speaker. An accessory such as a low voltage doorbell, buzzer or light can be attached to the relay switch. The accessory device will need separate power supply.

NOTE: Output switching capacity is low voltage (24V max, ac or dc).

Static and feedback is heard in Base Station.

PIR Motion Sensor is too close to the Base Station.

The PIR Motion Sensor is detecting motion only part of the time.

To detect cars, it is best to mount PIR Motion Sensor at height of car's motor and have it between ten and twenty feet from the road. Swivel sensor as needed.

The Alert is giving false alarms.

Check for moving tree branches or insects in sensor window. PIR motion sensor can also be triggered by light shining directly in sensor window, such as reflected sunlight, or motion in front of a light source.

Base Station beeps every ten minutes.

If there are two beeps the battery is low in the Base Station. Replace with AA Alkaline batteries or operate it with AC Adapter. If there are three beeps the battery is low in the PIR Motion Sensor. Replace with AA Alkaline batteries.

HOW TO ORDER REPAIR PARTS

DEK CANADA INC

1928 ST-REGIS BLVD.

DORVAL, QC

H9P 1H6

TEL: 514-685-5800

TOLL-FREE: 1-800-361-3198

FAX: 514-685-5804

www.dekcanada.com

**WHEN ORDERING REPAIR PARTS
PLEASE SUPPLY THE FOLLOWING INFORMATION:**

PART NUMBER	DESCRIPTION	MODEL NUMBER
--------------------	--------------------	---------------------