

SPECIFICATIONS

Output Rating.....5 Amps 28VAC or DC Max.
 Power18V to 35V, @ 30ma
 RF Frequency390MHz

If the power is other than shown in specifications, Accessory Transformer Model 95 is required. Model 86 Coaxial Cable Kit is also available.

Accessory Transmitters — Series 50, 60 and 80.

⚠ WARNING

Children operating or playing with a garage door opener can injure themselves and others. The garage door could close and cause serious injury or death. Do not allow children to operate the door control push button or the remote control transmitters.

Install receiver (and all door control push buttons) out of the reach of children and away from all moving parts of the door and door hardware, *but where the garage door is visible.*

This radio receiver incorporates constant closure contacts, and thus use on residential operators incorporating fail-safe infra-red sensors is prohibited

Disconnect power to opener(s) before installing receiver.

Garage door opener #1 (without transformer)

Refer to Figure 1 for wiring connections:

Connect 2-conductor bell wire (not supplied) to receiver terminal screws 3 and 4, and to the opener terminal screws used for the wall push button.

Also, connect bell wire to receiver terminal 2 and opener terminal screw 3; use a jumper wire to connect receiver terminals 1 and 3.

Garage door opener #1 (with transformer 95)

Refer to Figure 2 for wiring connections:

Connect bell wire to receiver terminal screws 1 and 2, and to transformer terminals. Also, connect bell wire (not supplied) to receiver terminal screws 3 and 4, and to opener terminal screws used for wall push button.

Garage door opener #2: Connect white and white/red bell wire from the receiver to the opener terminal screws used for the wall button.

Use a screwdriver to pry open the receiver cover, Figure 3.

Re-connect power to the opener and the accessory transformer, if used.

- Follow code switch remote control instructions, if applicable.
- Select a remote push button to operate opener #1.
- Press and *hold* the selected remote button. Then press and release the "smart" button labeled "A" on the receiver. The adjacent indicator light will FLASH.
- Release the remote push button. Opener #1 will now operate when the selected remote control push button is pressed.

Repeat the procedure, using "smart" button "B", with the other remote push button to program the second opener

Note: If a remote control push button is not pressed within 30 seconds, indicator light adjacent to selected "smart" button will turn OFF. In that case, repeat the programming.

LiftMaster 2-Channel Universal Receiver Model 422LM OWNER'S MANUAL

To comply with FCC/IC rules, adjustment or modification of receiver and/or transmitter is prohibited, except for changing the code setting or replacing the battery. THERE ARE NO USER SERVICEABLE PARTS.

Universal receiver Model 422LM can be used to operate two residential garage door openers or entryways with Model Series 60 code switch remote controls having red indicator lights, and up to four Model Series 80 "Smart" remote controls with green indicator lights.

In general, *code switch* remote controls are used when several persons are operating the same device. The code switches must be set to matching positions in *all* remote controls used to operate the same receiver. (Refer to the instructions included with Series 60 and 80 remote controls).

Both the receiver and the antenna use TV Type F coaxial connectors. The antenna can be plugged directly onto the receiver or mounted to a bracket and connected to the receiver with Model 86 Coaxial Cable Kit, if you need more range.

Select a location for the receiver which allows access to the terminals and space for the antenna (as far from metal structures as possible and preferably with the antenna in an upright position). Fasten the receiver securely with screws through the two holes provided in the cover flanges.

Figure 1

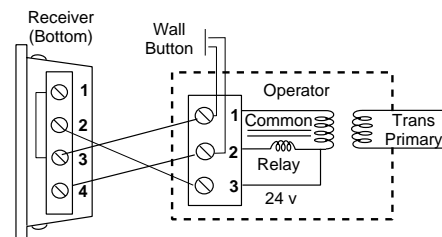
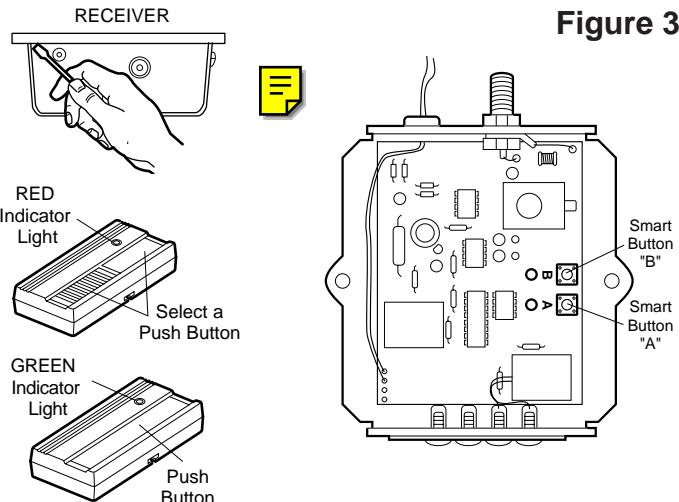
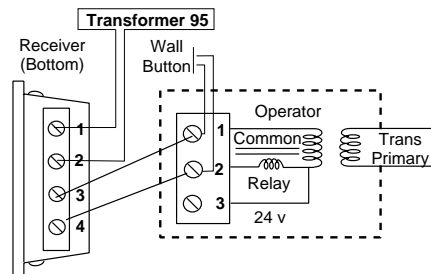


Figure 2



HOW TO ORDER REPAIR PARTS

DEK CANADA INC

1928 ST-REGIS BLVD.

DORVAL, QC

H9P 1H6

TEL: 514-685-5800

TOLL-FREE: 1-800-361-3198

FAX: 514-685-5804

www.dekcanada.com

**WHEN ORDERING REPAIR PARTS
PLEASE SUPPLY THE FOLLOWING INFORMATION:**

PART NUMBER	DESCRIPTION	MODEL NUMBER
--------------------	--------------------	---------------------