

# CHAMBERLAIN® LiftMaster® PROFESSIONAL

The remote light is designed to plug directly into a standard 120V outlet.

## Hardware provided with remote light:

- Light Clip Screw #4-20 x 7/16" (2)
- Screw #6 x 1" (2)
- Wall Anchor (2)

## Installation

1. Install the hinge and latch clips. Clips slide in between the metal plate and the plastic housing on each side of the light base. Secure the clips to the light base using the #4-20 x 7/16" screws (Figure 1).
2. Select an appropriate location on the ceiling to mount the light within 6' (1.8 m) of an electrical outlet so that the cord and light are away from moving parts.
3. **(380LM ONLY)**  
Mark screw holes on the ceiling by using the light base as a template. Install the #6 x 1" screws (provided). Leave 1/8" (3.1 mm) of the thread exposed between the ceiling and the screw head.

### **(380LMC ONLY)**

Install the ceiling mount plate with the #6 x 1" screws provided. Leave 1/8" (3.1 mm) of thread exposed between the ceiling mount plate and the screw head.

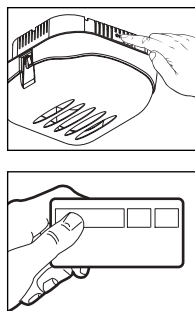
**NOTE:** If installing remote light on drywall and a ceiling joist can not be located, use wall anchors provided. No pilot hole is required for wall anchors.

4. Determine the length of power cord needed to reach the nearest outlet. Wind any excess cord around cord retainer on the top side of the light base.
5. Install the light base by pushing onto the screws and turning the base clockwise to lock the light in place.
6. Install two Type A19 incandescent or compact fluorescent bulbs. 100 watt maximum per bulb, 200 watts total.
7. Install the light lens by hooking one end of the lens over the hinge and pressing up on the other end to latch into place (Figure 2).
8. Plug in the light to outlet.

**NOTE:** Light will not operate until the unit is activated.

## Reprogramming Light or Additional Light

1. Press the "learn button" on light until LED comes ON.
2. Activate the garage door using the hand-held remote, wall control or keyless entry.
3. It has learned the code and the light turns on.



## Remote Light Installation for Models 380LM and 380LMC

### ⚠️ ⚠️ WARNING

To reduce the risk of SEVERE INJURY or DEATH:

- This portable luminaire has a polarized plug (one blade is wider than the other) as a feature to reduce the risk of electric shock.
- This plug will fit in a polarized outlet ONLY one way.
- If the plug does not fit fully in the outlet, reverse the plug.
- If it still does not fit, contact a qualified electrician.
- NEVER use with an extension cord unless plug can be fully inserted.
- DO NOT alter the plug.
- Light is intended for ceiling mount and indoor applications ONLY.

### CAUTION

To prevent possible OVERHEATING of the light socket,

- DO NOT use short neck or specialty light bulbs.
- DO NOT use halogen bulbs. Use ONLY incandescent or compact fluorescent bulbs

**NOTICE:** To comply with FCC and/or Industry Canada (IC) rules, adjustment or modifications of this receiver and/or transmitter are prohibited, except for changing the code setting or replacing the battery. THERE ARE NO OTHER USER SERVICEABLE PARTS.

Tested to Comply with FCC Standards FOR HOME OR OFFICE USE. Operation is subject to the following two conditions: (1) this device may not cause harmful interference, and (2) this device must accept any interference received, including interference that may cause undesired operation.

Figure 1

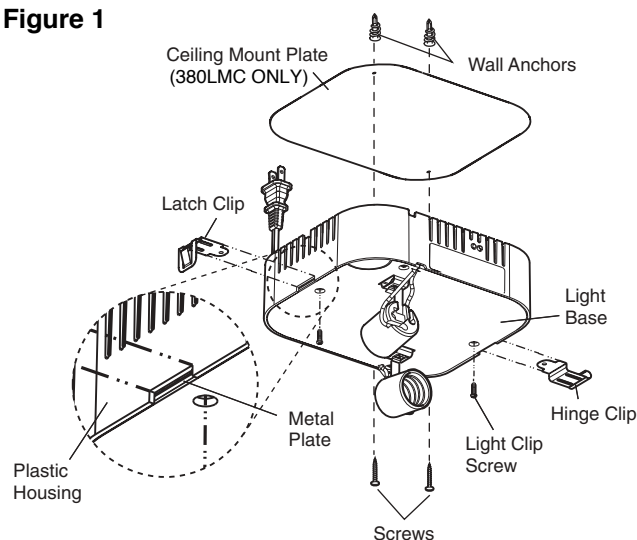
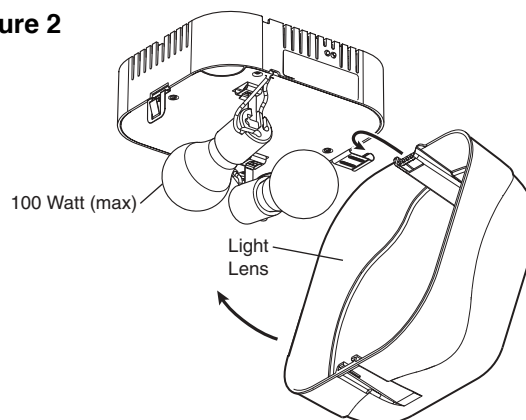


Figure 2



***HOW TO ORDER REPAIR PARTS***

**DEK CANADA INC**

1928 ST-REGIS BLVD.

DORVAL, QC

H9P 1H6

TEL: 514-685-5800

TOLL-FREE: 1-800-361-3198

FAX: 514-685-5804

**[www.dekcanada.com](http://www.dekcanada.com)**

**WHEN ORDERING REPAIR PARTS  
PLEASE SUPPLY THE FOLLOWING INFORMATION:**

<b>PART NUMBER</b>	<b>DESCRIPTION</b>	<b>MODEL NUMBER</b>
--------------------	--------------------	---------------------