

CHAMBERLAIN®
LiftMaster® MODELS 375LM & 375LMC
PROFESSIONAL
Universal Remote Control



Read instructions thoroughly **BEFORE** beginning.
Start with garage door closed. Identify garage door opener type - Smart/Learn button or DIP Switch. Smart/Learn button or DIP Switches are located on motor unit or external receiver.
Refer to owner's manual if necessary.
Proceed with instructions according to your type of garage door opener.

SMART/LEARN BUTTON

1 See Chart A to determine # of times to press button and write in blank on step 5.

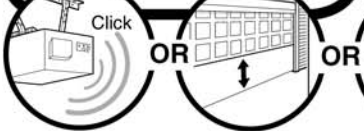
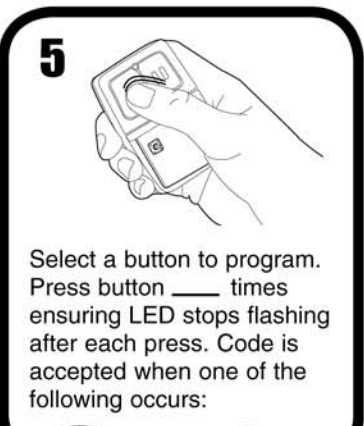
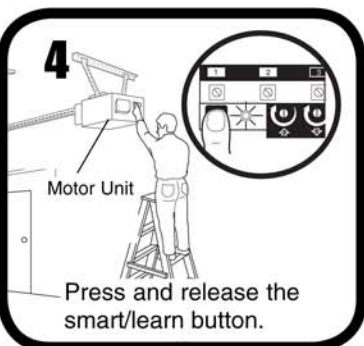
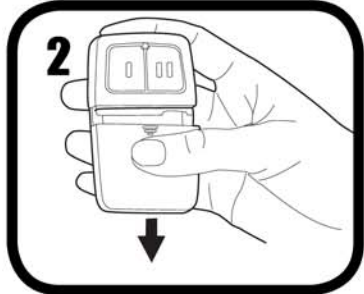


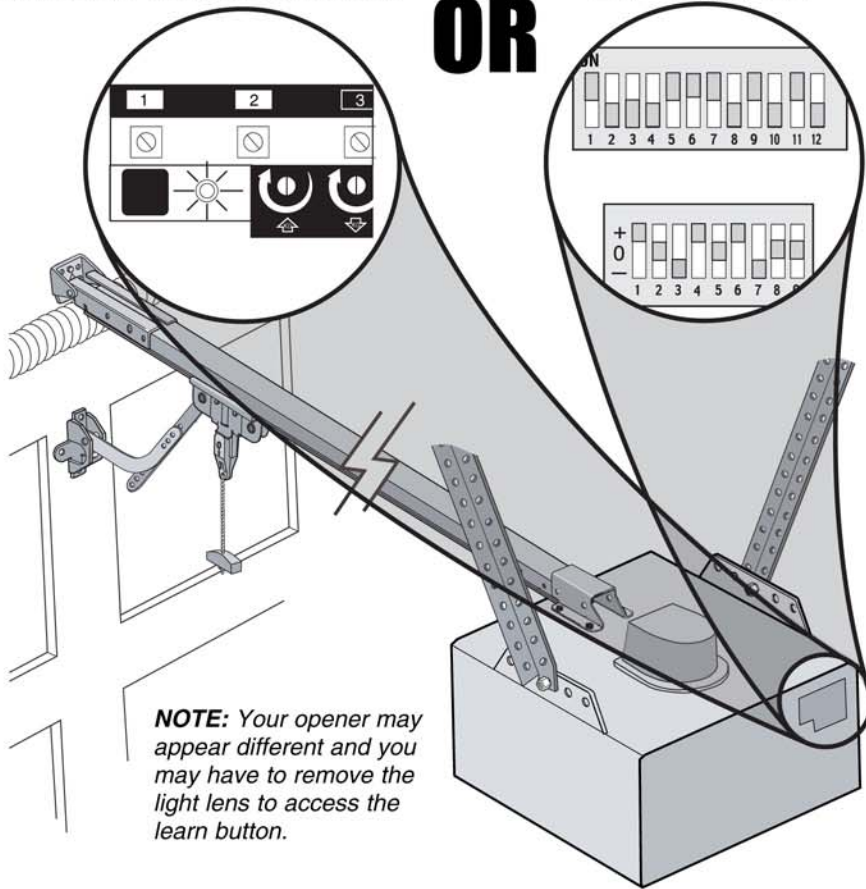
CHART A			
# of times to press button	Brand	Type/Color of Smart/Learn	Year
1	Linear®	Mega-Code	'97-Current
2	Chamberlain®	Orange	'97-'05
3	Chamberlain®	Purple	'05-Current
4	Chamberlain®	Green	'93-'96
5	Genie®	Overhead Door®	Intellicode
6	Genie®	Overhead Door®	Intellicode
7	Stanley®	Secure Code	'98
9	Wayne Dalton®	Rolling Code	'99
11	Chamberlain®	9 Position	'90-'92

CHART B			
# of times to press button	Brand	Description	Year
11	Chamberlain®	9 Position	'90-'92
12	Chamberlain®	9 Position	'90-'92
13	Genie®	12 Position	'85
14	Linear Multicode®	10 Position	'76
15	Chamberlain®	8 Position	'83-'89
16	Stanley/Multicode®	10 Position	'76
17	Genie®	9 Position	'85
18	Linear®	9 Position	'85
19	Moore-O-Matic®	8 Position	'76
19	Chamberlain®	7 Position	'83-'89

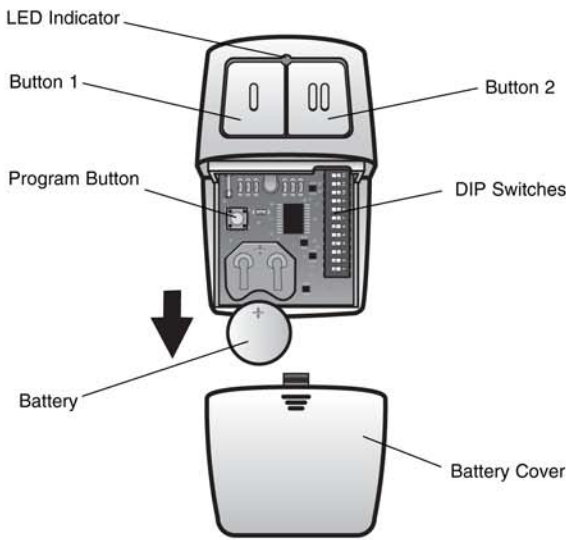
***NOTE:** LiftMaster, Do-It, Master Mechanic, Raynor, True Value and Sears Craftsman are compatible with Chamberlain technology.

SMART/LEARN BUTTON

DIP SWITCH



NOTE: Your opener may appear different and you may have to remove the light lens to access the learn button.



REMOTE CONTROL BATTERY

WARNING

To prevent possible **SERIOUS INJURY** or **DEATH**:
• NEVER allow small children near batteries.
• If battery is swallowed, immediately notify doctor.
To reduce risk of fire, explosion or chemical burn:
• Replace **ONLY** with 3V2032 coin batteries.
• Do **NOT** recharge, disassemble, heat above 212°F (100°C) or incinerate.

Dispose of batteries properly. Replace **ONLY** with 3V2032 coin batteries.

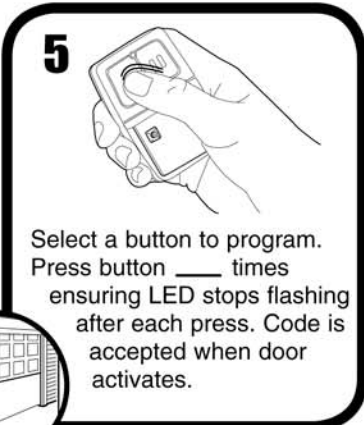
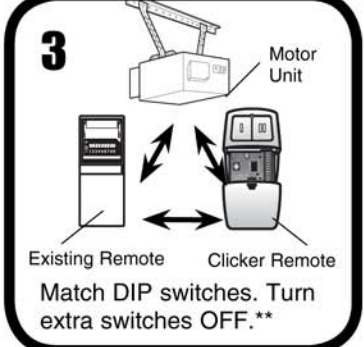
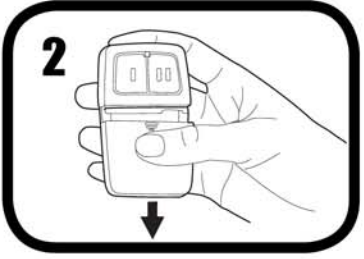
NOTICE: To comply with FCC and or Industry Canada (IC) rules, adjustment or modifications of this receiver and/or transmitter are prohibited, except for changing the code setting or replacing the battery. THERE ARE NO OTHER USER SERVICEABLE PARTS.
Tested to Comply with FCC Standards FOR HOME OR OFFICE USE. Operation is subject to the following two conditions: (1) this device may not cause harmful interference, and (2) this device must accept any interference received, including interference that may cause undesired operation.

WARNING

To prevent possible **SERIOUS INJURY** or **DEATH** from a moving gate or garage door:
• ALWAYS keep remote controls out of reach of children. NEVER permit children to operate, or play with remote control transmitters.
• Activate gate or door **ONLY** when it can be seen clearly, is properly adjusted and there are no obstructions to door travel.
• ALWAYS keep gate or garage door in sight until completely closed. NEVER permit anyone to cross path of moving gate or door.

DIP SWITCH

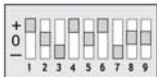
1 See Chart B to determine # of times to press button and write in blank on step 5.



NOTE:
2 Position DIP Switch:
If programming fails reverse DIP switches (OFF to ON and ON to OFF).



****3 Position DIP Switch:**
For Chamberlain remotes **DO NOT** use the "0" position, use "+" or "-".
If you already have a 3-button remote, DIP switch #1 must be set to "-" if the large button is to open the door. It may be necessary to reprogram original remote controls.



DEK CANADA INC.
1928 ST-REGIS BLVD., DORVAL, QC, H9P 1H6
TEL: 514-685-5800
TOLL-FREE: 1-800-361-3198
FAX: 514-685-5804
www.dekcanada.com