

For use with garage door openers, gate operators or other products that are 315 MHz Security+®. Compatible with garage door openers that have a **purple** learn button. The code between the remote control and the receiver changes with each use, randomly accessing over a billion new codes. Refer to your product manual for the location of the learn button.

NOTE: Your product may look different than the products illustrated in this manual.

PROGRAMMING THE REMOTE CONTROL

1

Locate the Smart/Learn button.

2

Press and immediately release the learn button. The learn LED will glow steadily for 30 seconds. Within 30 seconds...

3

Press and hold the button on the remote control that you wish to use.

Release the button when the garage door opener lights blink or two clicks are heard. If programming to other products, press the button a second time to activate the product.

TO CONTROL THE GARAGE DOOR OPENER LIGHTS

This feature is only available on garage door openers equipped with a multi-function door control and a remote control with more than one button. Not available with universal receiver. With Security+® remote controls, a remote control button can be programmed to operate the garage door opener lights without opening the door.

1

With the door closed, press and hold the remote control button that you want to control the light.

2

Press and hold the light button on the door control.

3

Press and hold the lock button on the door control.

After the garage door opener lights flash, release all buttons.

TO ERASE ALL CODES FROM MEMORY

Test by pressing the remote control button. The garage door opener lights should turn on or off but the door should not move.

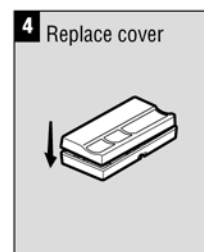
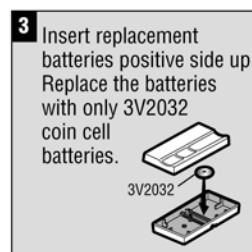
When deactivating any unwanted remote control code, all previous codes will be erased.

1

Press and hold the learn button on garage door opener or other product until the learn LED goes out (approximately 6 seconds). All previous codes are now erased. Reprogram each remote control you wish to use.

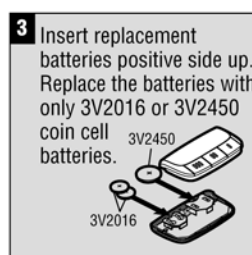
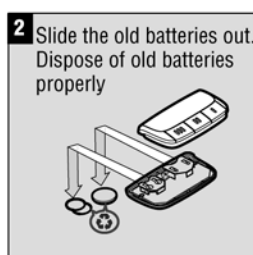
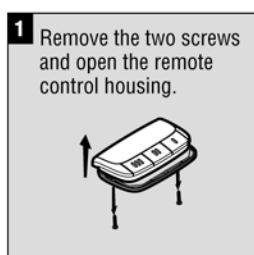
THE REMOTE CONTROL BATTERY

The lithium battery should produce power for up to 5 years. To replace battery:



Premium Remote Control Only

The 3V2016 lithium batteries for the opener and LEDs (marked "LED and Opener Battery") should last up to 5 years. The 3V2450 lithium battery for the proximity lighting (marked "Proximity Battery") should last 1-2 years. To replace the batteries:



WARNING

To prevent possible SERIOUS INJURY or DEATH:

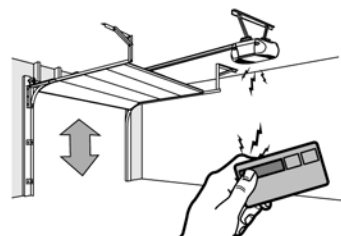
- NEVER allow small children near batteries.
- If battery is swallowed, immediately notify doctor.
- To reduce risk of fire, explosion or chemical burn:
- Replace ONLY with 3V2032 coin batteries.
- Replace ONLY with 3V2016 or 3V2450 coin batteries.
- DO NOT recharge, disassemble, heat above 212°F (100°C) or incinerate.

NOTICE: To comply with FCC and or Industry Canada rules (IC), adjustment or modifications of this receiver and/or transmitter are prohibited, except for changing the code setting or replacing the battery. THERE ARE NO OTHER USER SERVICEABLE PARTS.

Tested to Comply with FCC Standards FOR HOME OR OFFICE USE. Operation is subject to the following two conditions: (1) this device may not cause harmful interference, and (2) this device must accept any interference received, including interference that may cause undesired operation.

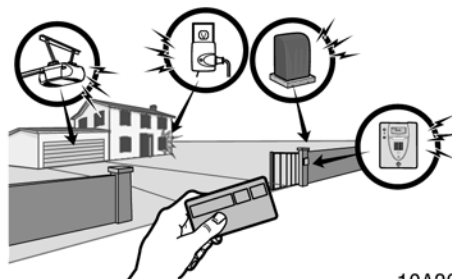
HOW TO USE THE REMOTE CONTROL

Press and hold the button down until the door or gate starts to move. The remote control will operate the garage door up to 3 car lengths away on typical installations. Installations and conditions vary, contact an installing dealer for more information.



3-BUTTON REMOTE CONTROLS

Additional buttons on any Security+® remote control or mini-remote control can be programmed to operate other Security+® garage door openers, light controls, gate operators or access control systems.



REPLACEMENT PARTS

3V2032 Lithium battery10A20
Visor Clip (not available for mini-remote controls).....29B137

Premium Remote Control Only

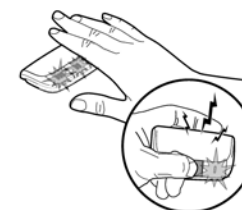
3V2016 Lithium battery: LED and Opener (2 required) 10A19
3V2450 Lithium battery: Proximity Switch 10A33
Visor Clip29C151

ONE YEAR LIMITED WARRANTY

The Chamberlain Group, Inc. warrants to the first retail purchaser of this product that is free from defect in materials and/or workmanship for a period of 1 year from the date of purchase.

PREMIUM REMOTE CONTROL ONLY

The premium remote controls are equipped with a proximity lighting feature. When a hand moves within close proximity to the remote control, the LED lights turn on for 3 seconds. Upon successful activation of a remote control button, the LED lights will blink rapidly. To conserve battery life the proximity lighting feature may be disabled. The remote control will turn off the proximity lighting feature if the proximity lighting is turned on 10 consecutive times without activation of a button. To re-enable the proximity lighting, simply press a button.



Troubleshooting

PROBLEM	SOLUTION
LEDs are erratic, dim or not illuminated when a hand comes within close proximity	Press one of the buttons on the hand-held remote control.
	Sit remote control undisturbed for 60 seconds on a non-metallic surface. This allows the sensor to recalibrate itself.
	Replace proximity battery with same type coin cell (3V2450).
Dim LED lights - OR - No rapid LED blinking after pressing a button	Replace two batteries with same type coin cells (3V2016).
The proximity sensor will not work	If the spring contact inside the remote is bent the proximity sensor will not work.

DEK CANADA INC.

1928 ST-REGIS BLVD., DORVAL, QC, H9P 1H6

TEL: 514-685-5800

TOLL-FREE: 1-800-361-3198

FAX: 514-685-5804

www.dekcanada.com